

ASTEC

GFRP Soil Nail

GFRP passive anchor solution
for slope stabilization



Dextra

About GFRP Soil Nail

A Passive Anchor is not pre-tensioned. Applied loads are transmitted from the ground or ground structure directly. A passive anchor does not usually have a free (unbonded) length of tendon.

A typical application for Passive Anchors is the stabilization of soil-covered slopes, which are constantly moving due to gravity. In that case Passive Anchors are inserted from the face of slope into the stable ground and grouted to provide preventive anchoring in case the soil starts moving.

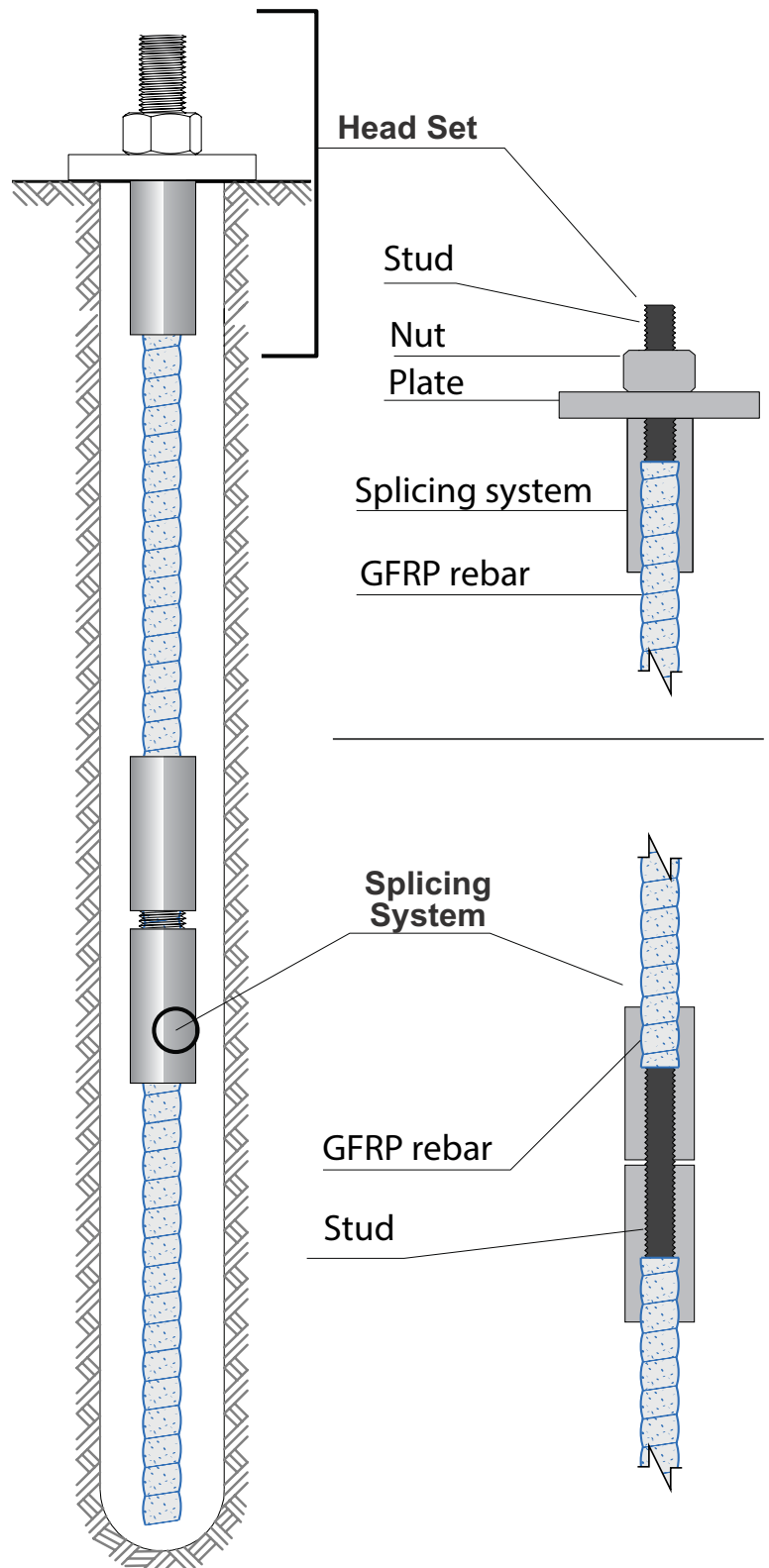
Standards

- ACI 440-4R-04
- FHWA-IF-03-017
- FHWA-SA-96-069
- HK GEOGUIDE 7
- ISO 6934-4

Product Features

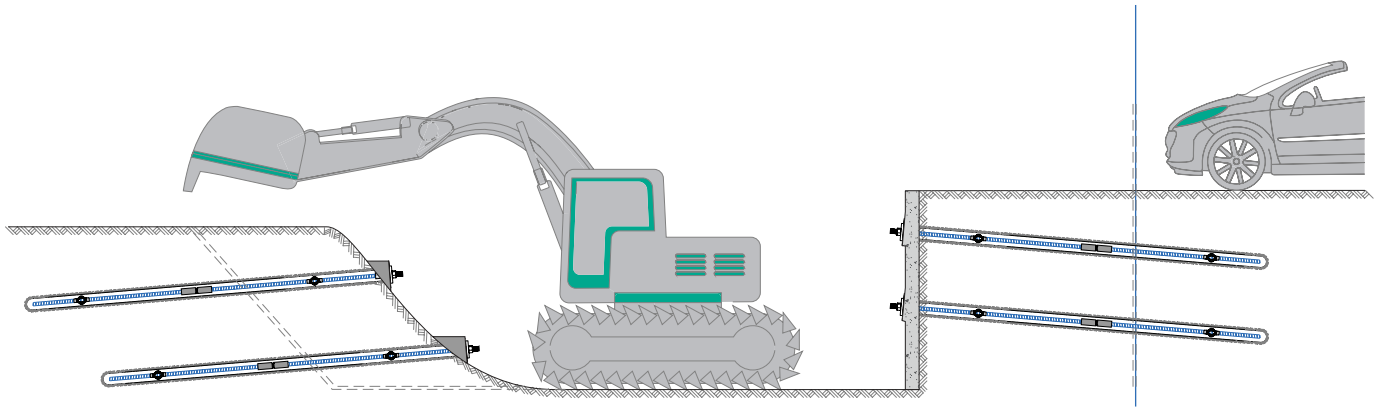
- **For temporary applications**, take advantage of the cuttable nature of FRP bars. At the end of the project, the anchor doesn't need to be removed from the ground, as it can be cut by standard earth moving equipment or Tunnel Boring Machines.
- **For permanent applications**, the full resistance of the FRP anchor to corrosion will guarantee optimal performance over the years. No additional corrosion protection accessories required.
- **Splicing system:** Dextra provides a unique splicing system allowing to splice FRP bars to achieve longer tendon length.
- **4 bar/anchor diameters available** for an ultimate tensile load up to 770 kN.

Product design & concept



Applications

SLOPE PROTECTION



Technical Information

Grade/Dia	Bar Performance (kN)	System Performance (kN)	Grade/Dia	Bar Performance (kN)	System Performance (kN)
SN45T-25	324	310	SN45P-25	324	310
SN45T-32	450	430	SN45P-32	450	430
SN45T-41	709	700	SN45P-41	709	700
SN50T-19	300	250	SN50P-19	300	250
SN50T-25	428	310	SN50P-25	428	310
SN50T-32	631	430	SN50P-32	631	430
SN50T-41	990	770	SN50P-41	990	770

T for temporary application

P for permanent application.



Kwun Tong line extension - HK



MTR Kwun Tong Extension C1001 - HK



Project 823A, Hong Kong, China



Chai Wan Columbarium, Hong Kong, China



Commercial presence
in more than
55 countries



Dextra

**HEADQUARTERS
THAILAND**

Dextra Manufacturing Co.,Ltd.
Tel: (66) 2 021 3800

CHINA

Dextra Building Products (Guangdong) Co.,Ltd.
Tel: (86) 20 2261 9901

HONG KONG

Dextra Pacific Ltd.
Tel: (852) 2511 8236

EUROPE

Dextra Europe SARL
Tel: (33) 1 45 53 70 82

MIDDLE EAST

Dextra Middle East FZE
Tel: (971) 4886 5620

INDIA

Dextra India Pvt.,Ltd.
Tel: (91) 22 2839 2694

NORTH AMERICA

Dextra America Inc.
Tel: (1) 818 261 5166

LATIN AMERICA

Dextra Latam
Tel: (507) 831 1422

BRAZIL

Dextra do Brasil
Tel: (55) 119 7577 8112