

UNITEC

The Universal Splicing System

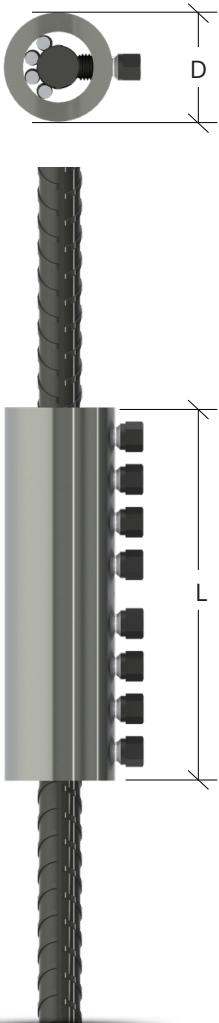


Dextra

www.dextragroup.com

Product features

Unitec is a shear-bolt coupling system for the connection of concrete reinforcement bars from Ø12 to 50 mm (ASTM #4 to #18).



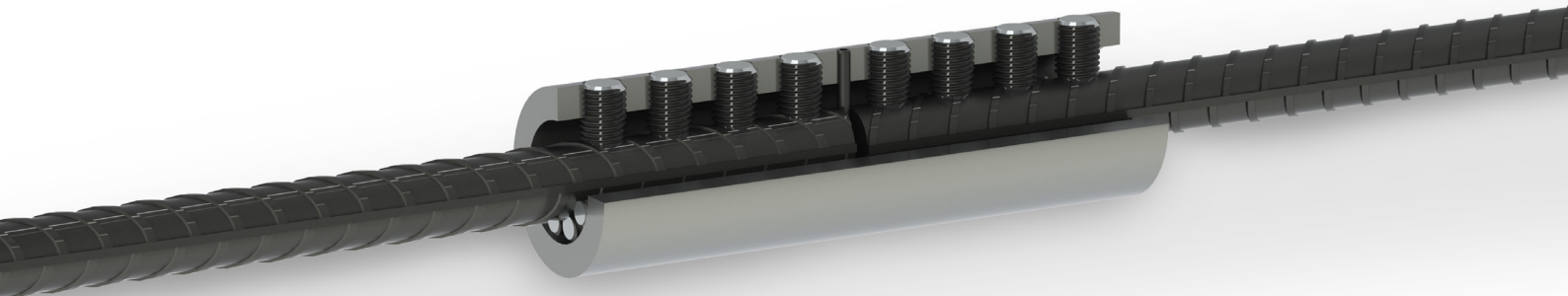
Bar size			Order codes	Coupler dimensions				Screw size	Total number of screws
Europe	USA & Mexico	Canada		Outside diameter (D)		Length (L)			
				(mm)	(in)	(mm)	(in)		
12, 12.5	#4		FPUS0400002	48	1 7/8	140	5 1/2	M12	6
14, 16	#5	15M	FPUS0500002	48	1 7/8	140	5 1/2	M12	6
18, 20	#6	20M	FPUS0600002	52	2 1/6	200	7 7/8	M12	8
20, 22	#7	20M	FPUS0700002	59	2 3/4	180	7 1/8	M16	6
24, 25, 26	#8	25M	FPUS0800002	62	2 1/2	240	9 1/2	M16	8
28	#9		FPUS0900002	76	3	220	8 3/8	M20	6
30, 32	#10	30M	FPUS1000002	83	3 3/4	280	11	M20	8
34, 36	#11	35M	FPUS1100002	89	3 1/2	360	14 1/8	M20	10
38, 40	#12		FPUS1200002	95	3 3/4	425	16 3/4	M20	12
43	#14	45M	FPUS1400002	95	3 3/4	555	21 7/8	M20	16
50			FPUS5000002	107	4 1/4	620	24 3/8	M20	18
	#18	55M	FPUS1800002	122	4 3/4	640	25 1/4	M24	16

Transition splicing between two different rebar diameters is also possible using the following models:

Larger bar size			Smaller bar size			Order codes
Europe	USA & Mexico	Canada	Europe	USA & Mexico	Canada	
25, 26	#8	25M	20, 22, 24	#6, #7	20M	FPUS0800002
30, 32	#10	30M	25, 26	#8	25M	FPUS1000002
			28	#9		

Benefits

- Site assembly with standard impact wrench.
- No need of bar end preparation.
- Readily available off the shelf.
- Ideal for concrete-embedded bars, repair and retrofit works, bent bars, etc.
- Type 2 splice as per ACI 318 requirements.
- Complies with BS 8110 and NF A35-020 standards.



Packing

Unitec couplers are packed in wooden crates that should be stored under a roof and protected from natural elements.

Bar size			Order codes	Qty / box (pieces)	Net weight (kg)	Gross weight (kg)
Europe	USA & Mexico	Canada				
12, 12.5	#4		FPUS0400002	200	267	289
14, 16	#5	15M	FPUS0500002	200	255	277
18, 20	#6	20M	FPUS0600002	100	199	221
20, 22	#7	20M	FPUS0700002	100	239	261
24, 25, 26	#8	25M	FPUS0800002	50	169	191
28	#9		FPUS0900002	30	170	192
30, 32	#10	30M	FPUS1000002	50	393	415
34, 36	#11	35M	FPUS1100002	20	225	247
38, 40	#12		FPUS1200002	10	143	165
43	#14	45M	FPUS1400002	10	186	208
50			FPUS5000002	10	236	258
	#18	55M	FPUS1800002	10	367	389

Note: The weight of the crates varies depending on ambient humidity

Please ensure that order quantities are a multiple of the packaging quantities stated in the table. External dimensions of crate = W 83.4 cm, L 63.4 cm, H 29.0cm.

Quality assurance

Dextra's Quality Management System complies with the requirements of:

- Bureau Veritas ISO 9001:2008 - TH006540
- UK CARES ISO 9001:2008 - 1086
- ASME NCA-3800



Each coupler is marked with symbols that enable to trace back to each raw material and production batch data.

Product approvals

Unitec couplers have been certified by the following authorities:



- UK CARES for use with grade B500B and B500C and bars Ø 12 to 40mm as per BS 4449.



- AFCAB for use with grade B500B and bars Ø 12 to 40mm as per NF A35080.



- Dubai Municipality Approval for bars Ø 12 to 40mm as per TAC 130-2013.



- Romania Technical Approval # 003-01/101-2017 for bars Ø 12 to 40mm.

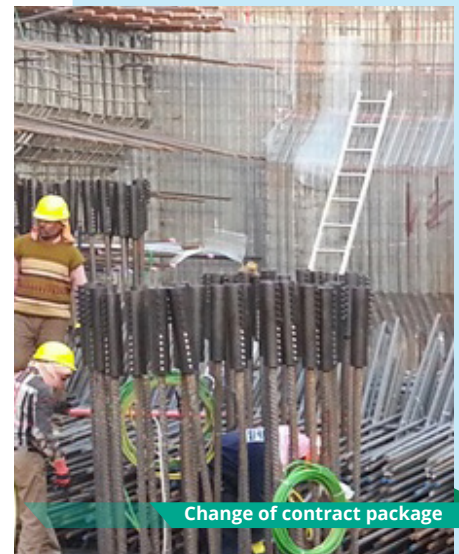


- Australian Technical Approval for bars Ø 20 to 36mm as per A5660406.

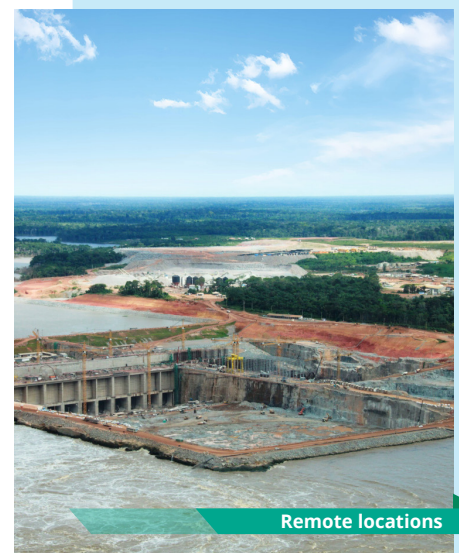
Applications



Repair and retrofitting



Change of contract package



Remote locations



National Bank of Kuwait New Headquarters, Kuwait



Delhi Metro, Delhi, India



Commercial presence
in more than
55 countries



HEADQUARTERS THAILAND
Dextra Manufacturing Co.,Ltd.
Tel: (66) 2 021 3800

CHINA
Dextra Building Products (Guangdong) Co.,Ltd.
Tel: (86) 20 2261 9901

HONG KONG
Dextra Pacific Ltd.
Tel: (852) 2511 8236

EUROPE
Dextra Europe SARL
Tel: (33) 1 45 53 70 82

MIDDLE EAST
Dextra Middle East FZE
Tel: (971) 4886 5620

INDIA
Dextra India Pvt.,Ltd.
Tel: (91) 22 2839 2694

NORTH AMERICA
Dextra America Inc.
Tel: (1) 206 742 6020

LATIN AMERICA
Dextra Latam
Tel: (507) 831 1422

BRAZIL
Dextra do Brasil
Tel: (55) 119 7577 8112